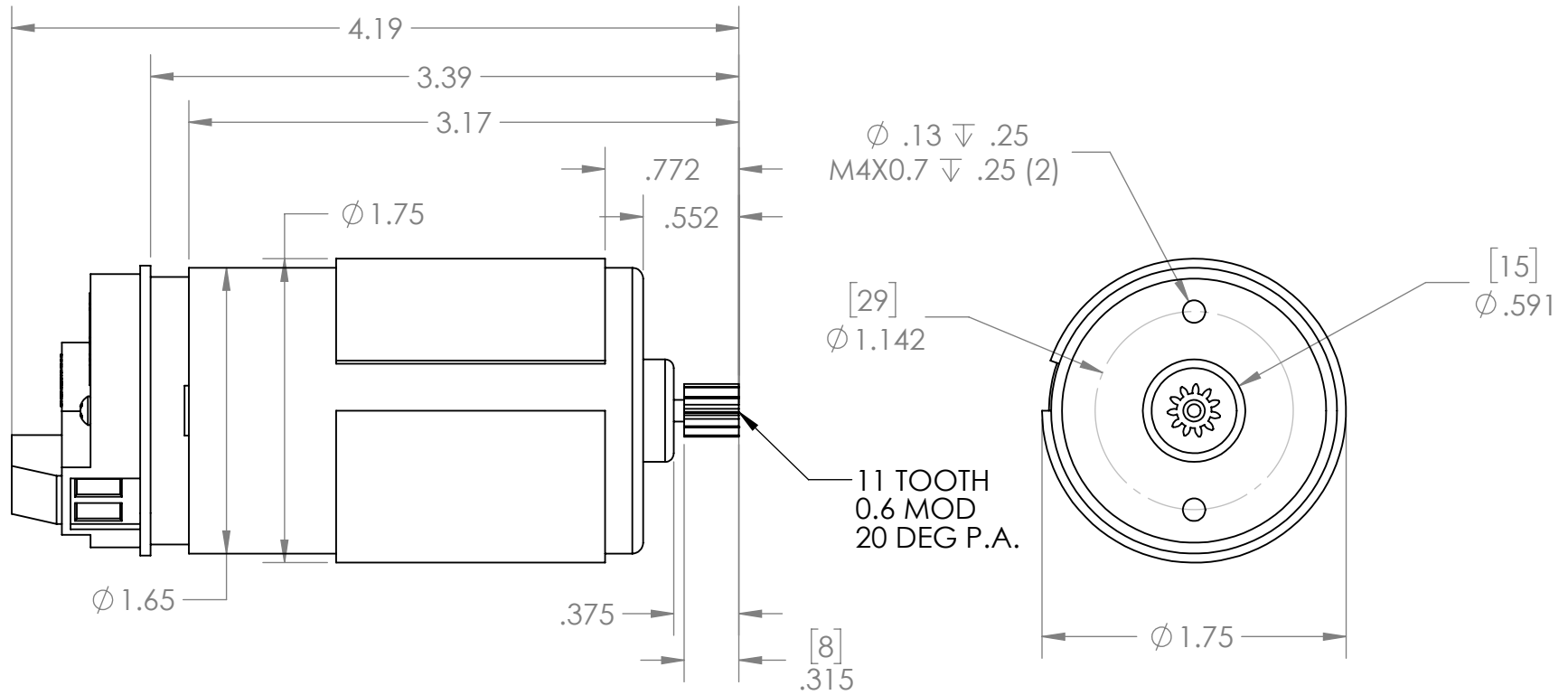
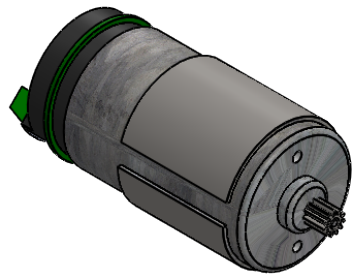



REVISION HISTORY			
REV.	DESCRIPTION	DATE	DRAWN BY
1	ORIGINAL PRINT	5/12/2017	J. ANG
2	DRAWN TO MEET AMDS-1	6/26/2018	A. SHORES
3	PART NAME CORRECTION AND ADDED GEAR NOTE	12/31/2019	K. KOLODZIEJ



*** SEE CAD FOR ADDITIONAL TOOLPATH INFO***



UNLESS OTHERWISE SPECIFIED:		COMMENTS:				
DIMENSIONS ARE IN INCHES		DUAL DIMENSIONS ARE IN MILLIMETERS.		TITLE: RS775-125 MOTOR WITH ENCODER FOR PG27 GEARBOX		
TOLERANCES:		BREAK ALL SHARP EDGES		SIZE	DWG. NO.	REV
FRACTIONAL	$\pm 1/16$			A	am-3109	3
ANGULAR: MACH	$\pm 1^\circ$			SCALE: 1:2 WEIGHT: SHEET 1 OF 1		
ANGULAR: BEND	$\pm 5^\circ$					
ONE PLACE DECIMAL	± 0.1					
TWO PLACE DECIMAL	± 0.01					
THREE PLACE DECIMAL	± 0.005					
FOUR PLACE DECIMAL	± 0.0005					
MATERIAL		NAME	DATE			
FINISH		CHECKED				
		ENG APPR.				
		MFG APPR.				
DO NOT SCALE DRAWING		Q.A.				